

**MEM Bath spout for wall mounting - Brushed Platinum**

MEM

13 801 782



- 220mm projection
- rectangular, air-enriched flow
- rosette 60 x 60 mm
- hole diameter 37 mm
- 1/2" connection
- max. flow 38.5 l/min at 3 bar flow pressure
- WRAS 2203039

|   |                                     |               |
|---|-------------------------------------|---------------|
|  | Brushed Platinum                    | 13 801 782-06 |
|  | Chrome                              | 13 801 782-00 |
|  | Platinum                            | 13 801 782-08 |
|  | Dark Chrome                         | 13 801 782-19 |
|  | Brushed Durabrass<br>(23kt Gold)    | 13 801 782-28 |
|  | Brushed<br>Champagne (22kt<br>Gold) | 13 801 782-46 |
|  | Champagne (22kt<br>Gold)            | 13 801 782-47 |
|  | Brushed Dark<br>Platinum            | 13 801 782-99 |

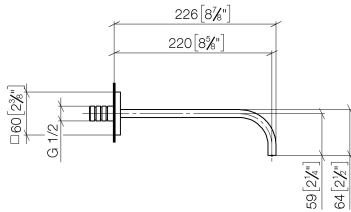
**Recommended miscellaneous**



- Concealed wall elbow -** 35 085 970 90
- max. recess depth 163 mm
  - min. recess depth 90 mm

13 801 782

mm [inches]



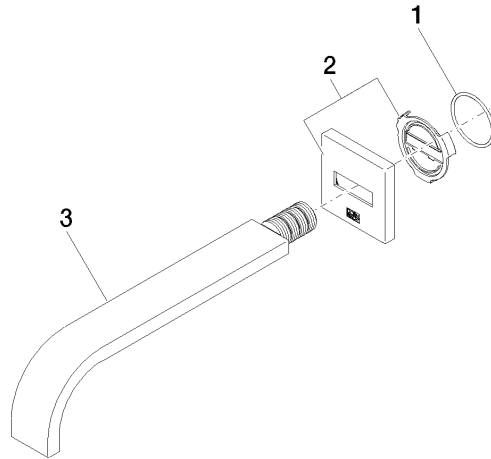
Flow rate chart



Certificates

WRAS\_2203039. IAPMO\_4976 (6).

13 801 782



### Spare parts list

| No. | Item Number        | Name    | Quantity used | Delivery time |
|-----|--------------------|---------|---------------|---------------|
| 1   | 09 14 10 111 90    | seal    | 1             | 2             |
| 2   | 90 27 78 035 00-06 | rosette | 1             | 10            |
| 3   | 04 28 22 290 00-06 | spout   | 1             | 10            |